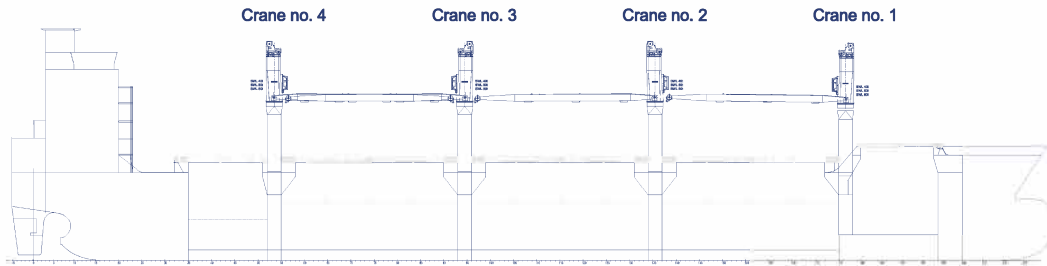


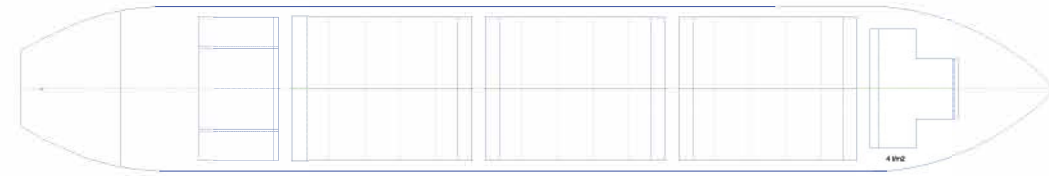
W-CLASS VESSELS

SIDE VIEW



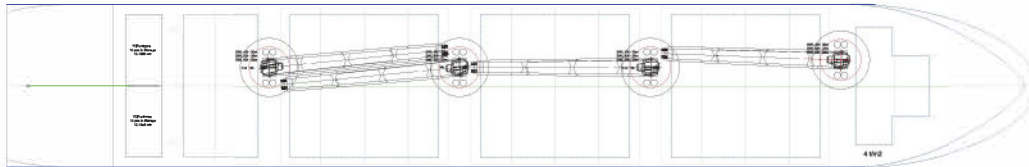
TWEENDECK

Intake is always subject to vessel's stability, trim, permissible weights and is subject to regulations of visibility. Lifting capacity of vessel's cranes is subject to vessel's stability and can depend on cargo/ballast on board. Container data as well as bale capacity assumes tweendeck ashore. The figures given herewith are for "reference" only and they must not be used as basis for Charter Parties or other contracts without AAL's explicit written authority. For more information on individual vessels within the AAL fleet, please chartering@aalshipping.com.

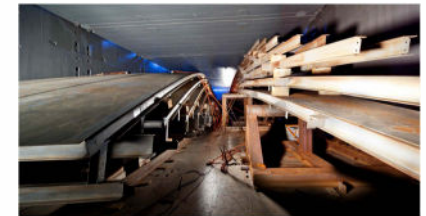
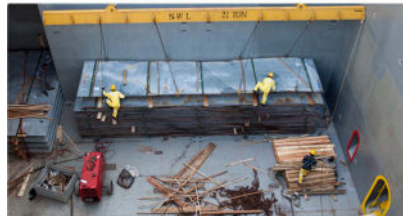
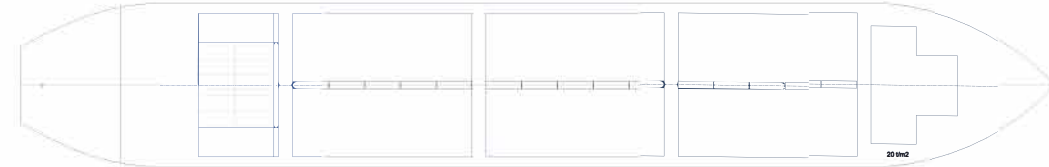


WEATHER DECK

Crane no. 1-4
 1 SWL 60t - 20m
 2 SWL 50t - 24m
 3 SWL 40t - 30m



TANK TOP



Global Head Office

Singapore, SG
 T: +65 6248 3600
 E: chartering@aalshipping.com

Europe

Hamburg, DE (Regional Hub)
 T: +49 40 36 13 04 505
 E: chartering@aalshipping.com
 Porvoo, FI
 T: +358 40 827 7031
 E: chartering@aalshipping.com
 Paris, FR (Africa Enquiries)
 T: +33 6 1578 1859
 E: chartering@aalshipping.com

Middle East

Dubai, AE (Regional Hub)
 T: +97 14 433 1103
 E: chartering@aalshipping.com

Asia

Shanghai, CN
 T: +86 21 6135 9600
 E: china@aalshipping.com
 Beijing, CN
 T: +86 10 8447 5255
 E: china@aalshipping.com
 Qingdao, CN
 T: +86 532 8575 3558
 E: china@aalshipping.com

Tokyo, JP

T: +81 3 3541 9192
 E: japan@aalshipping.com

Oceania

Brisbane, AU (Regional Hub)
 T: +61 7 3332 8555
 E: chartering@aalshipping.com

Americas

Houston, US (Regional Hub)
 T: +1 713 980 1100
 E: chartering@aalshipping.com

W-CLASS VESSELS

Type	Multipurpose Dry Cargo Ship			
Class	DNV-GL 100 A5; BWM; Equipped for Carriage of Containers; DBC SOLAS-II-2, Reg. 19 G IW NAV-0, Strengthened for heavy cargo, MC, AUT EP-D			
Deadweight	33,217 t (without Tweendecks) 32,387 t (with Tweendecks)			
GT/NT	22,863 / 10,602			
LOA	179.50 m			
LBP	169.00 m			
Breadth (Moulded)	28.00 m			
Depth (Moulded)	15.10 m			
Draft (Summer)	10.80 m			
Holds	5			
Hatches	5			
Tweendecks	3			
Cargo Hold Dimensions	Hold	Capacity w/o TWD (m³)	Capacity with TWD in Lower Position (m³)	
			Hatch Size (L X B)	
	1	3,242	3,242	12.6m x 20.04m/10.19m
	2	10,551	9,711	25.6m x 24.4m
	3	10,551	9,711	25.6m x 24.4m
	4	10,551	9,711	25.6m x 24.4m
	5	4,147	4,147	12.8m x 24.4m
	Total	39,042	36,522	(Tweendecks in holds 2/3/4)

Floor Space	Hold	Area (sqm)	Bottom Size (L x B)
	1	227	7.8/6.9m x 20.1/10.2m
	2	742	30.4m x 24.4m
	3	742	30.4m x 24.4m
	4	742	30.4m x 24.4m
	5	197 + 135 (monkey rocks)	13.6m x 14.5m (24.4m)
	Total	2650 + 135 (MR) = 2,785 tank top area total	

Clear height in Hold 14.86 m

Hold 1, 2, 3, 4, 5; Sprinkler system in hold 1

Hatch Co2 - fitted

Hydraulic folding type hatchcovers covers
Always one panel folding upright forward and aft

Hold	Area (sqm)	Hatch Cover Sizes (L X B)
Hold 1	206	6.9/6.1 m x 20.5/10.6 m
Hold 2-4	2067	29.1 m x 26.5 m (each)
Hold 5	352	13.3 m x 26.5 m
Total	2,625	

Holds Capacity/ Volume (100%) 36522 cbm Tweendecks installed / 39042 cbm Tweendecks stowed on deck

Total 40,526m³

Max Permissible Load Weather deck: 4.0 t/m²
Tank top: 20.0 t/m²
Tweendecks: 4.0 t/m²

Jump Loads Hold 3+5 or 1+3 or 2+4 or 1+3+5 can be empty while remaining ones are loaded

Container Capacity Container Capacity (total FEU): 210 FEU on deck, 307 FEU in holds

Reefer Containers 30 Reefer Points on Deck

Cargo Gear Crane No. 1 - 4: SWL 60t / 20m; 50t / 24m; 40t / 30m

Crane Capacity 4 electro hydraulic single deck crane; SWL = 60t

Maximum Lift Combined 109 t

Main Engine STX-MAN B&W 6S50MC-C7; MCR 8800 kW / 11440 HP @ 127 RPM; CSR 5,400 kW @ 110 (86% of MCR)

Auxiliary Engines 3 x STX, 2 x 510kW, 1 x 425kW

Ventilation Dual Fans in Holds no. 1-4, 6 changes per hour; Single Fan in Holds no. 5, 7 changes per hour

Dangerous Cargo Class 1.1 to 1.6 packaged goods in Hold No. 1; Class 2.1 3, 4.3 6.1, 8 and 9 in holds No. 1 to 4. Class 2.2 , 4.1 4.2, 6.1 (solids) in all holds – see vessel's DOC for the carriage of dangerous goods

Smoke Detection / Firefighting Carbon Dioxide in Holds No. 1 to 5; Hold 1 additional sprinkler system

Timber Fitted Vessel fitted with stanchion pockets and lashing points. No slings/stanchions or lashing materials

Other Vessel is compliant with additional entry regulations for: Australia (cargo holds fitted with ladders); Panama Canal and the Suez Canal. Vessel is suitable for grab discharging. Vessel possesses an onboard traverse beam. Vessel has no bowthruster.

VESSEL NAME	AAL PARIS
YEAR BUILT	2011
IMO NO.	9594494
CALL SIGN	D5PY6
FLAG	LIBERIA

AAL's highly flexible 33,217dwt W-Class vessels serve a growing portfolio of global services and offer our customers significant economies of scale and market-leading intake capacity on every sailing – able to stow heavy-lift project cargo alongside breakbulk and dry bulk.



chartering@aalshipping.com
www.aalshipping.com | www.aalshipping.com.cn



WeChat ID: AALSHIPPING
新加坡澳亚航运有限公司上海代表处



powered by partnerships