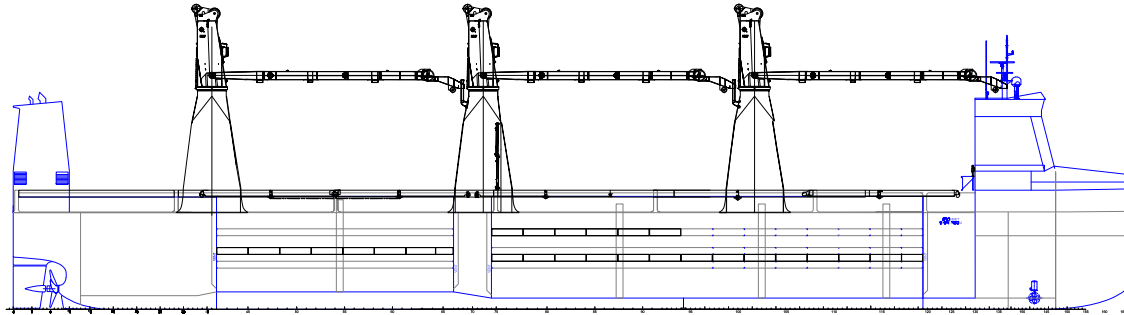


SUPER B-CLASS VESSELS

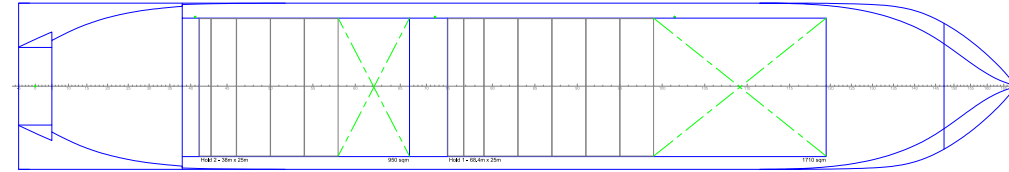
Intake is always subject to vessel's stability, trim and permissible weights. Lifting capacity of vessel's cranes is subject to vessel's stability and can depend on cargo/ballast on board. Container data as well as bale capacity assumes tweendeck ashore. The figures given herewith are for "reference" only and they must not be used as basis for Charter Parties or other contracts without AAL's explicit written authority.

For more information on individual vessels within the AAL fleet, please contact chartering@aalshipping.com.

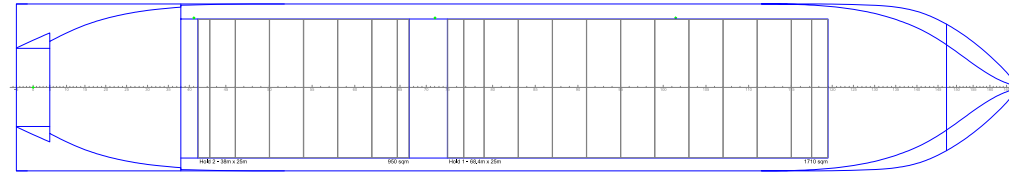
SIDE VIEW



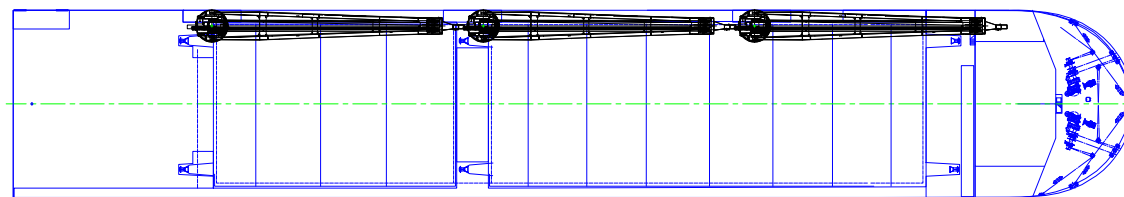
UPPER TWEENDECK



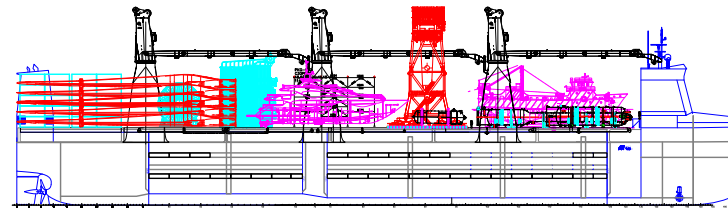
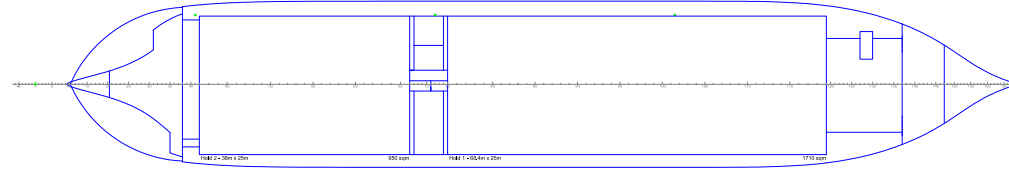
LOWER TWEENDECK



WEATHER DECK



TANK TOP



Global Head Office
Singapore, SG
T: +65 6248 3600
E: chartering@aalshipping.com

Europe
Hamburg, DE (Regional Hub)
T: +49 40 36 13 04 505
E: chartering@aalshipping.com
Porvoo, FI
T: +358 40 827 7031
E: chartering@aalshipping.com
Paris, FR (Africa Enquiries)
T: +33 6 15 78 18 59
E: africa@aalshipping.com

Middle East
Dubai, AE (Regional Hub)
T: +97 1 4 433 1103
E: chartering@aalshipping.com

Asia
Shanghai, CN
T: +86 21 6135 9600
E: china@aalshipping.com
Beijing, CN
T: +86 10 8447 5255
E: china@aalshipping.com
Qingdao, CN
T: +86 532 8575 3558
E: china@aalshipping.com

Tokyo, JP
T: +81 3 3541 9192
E: japan@aalshipping.com

Oceania
Brisbane, AU (Regional Hub)
T: +61 7 3332 8555
E: chartering@aalshipping.com

Americas
Houston, US (Regional Hub)
T: +1 713 980 1100
E: chartering@aalshipping.com

SUPER B-CLASS VESSELS

Type	Multipurpose Dry Cargo Ship	Holds Capacity / (Volume 100%)	No.1: 25,821 cbm No. 2: 13,585 cbm	Auxiliary Engines (3 Sets)	2 x 1700 kW and 1 x 1065 kW
Class	DNV +1A, Multi-purpose dry cargo ship, BIS, BWM(T), DG(P,B), DBC, Strengthened(IB), Grab(1-10), LCS(DC), COAT-PSPC(B), TMON(oil lubrication), Recyclable, NAUT(NAV), E0, ER(SCR, TIER III), Clean(Tier III)	Total	41,500 cbm	Bow Thruster	Yes
Deadweight	abt 32,000 t	Floor Space	Tank Top: 2,660 m ² Tweendeck: 2,660 m ² Additional 760 m ² on triple deck Weather Deck: 3,880 m ²	Stern Thruster	Yes
GT/NT	25,400 / 9,400	Max Permissible Load	Weather Deck Hatch Covers: 5.5 t/m ² Tweendeck Hatch Covers: 3.5 t/m ² Tank Top: 22.00 t/m ²	Anti-Heeling System	The vessel is equipped with anti-heeling tanks, with an automatic system fully monitored and controlled from the cargo office.
LOA	179.90 m	Container Capacity	850 TEU in holds 1347 TEU on deck	Dehumidifiers / Ventilation	Two independent dehumidifiers serve both cargo holds. Ventilation of cargo holds are in accordance with the requirements for carriage of dangerous cargo.
LBP	176.90 m	Total TEU	2197 TEU	Dangerous Cargo	All classes of dangerous goods in package form can be carried on deck except above engine room, and under deck in line with IMDG and class regulations.
Breadth (Moulded)	30.0 m	Reefer Containers	35 Reefer Plugs	Smoke Detection / Fire Fighting	All cargo holds are equipped with a fire detection system and a CO2 fire extinguishing system.
Depth (Moulded)	15.5 m	Cargo Gear	3 cranes, SWL 350 t		
Draft (Summer)	10.3 m	Maximum Lift	Combined 700 t (Either with cranes 1&2, or 2&3), whereas 'AAL Newcastle' and 'AAL Mumbai' will feature a combined lift of 800 t		
Holds	2	Main Engine	MAN B&W 6S50ME-C9.7 MCR 7,380 kW at 107 RPM CSR 6,273 kW at 101 RPM		
Hatches	2				
Tweendecks	Complete Tweendeck levels for holds 1 & 2 / flexible positions				
Hatch Dimensions (L x B)	No. 1: 68.4 m x 25 m No. 2: 38.0 m x 25 m				

VESSEL NAME	AAL ANTWERP	AAL DUBAI	AAL HAMBURG	AAL HOUSTON	AAL LIMASSOL	AAL DAMMAM	AAL NEWCASTLE	AAL MUMBAI
DELIVERY DATE	Already delivered	Already delivered	Already delivered	Already delivered	Already delivered	Already delivered	2026	2026



chartering@aalshipping.com
www.aalshipping.com | www.aalshipping.com.cn



WeChat ID: AALSHIPPING
新加坡澳亚航运有限公司上海代表处



powered by partnerships