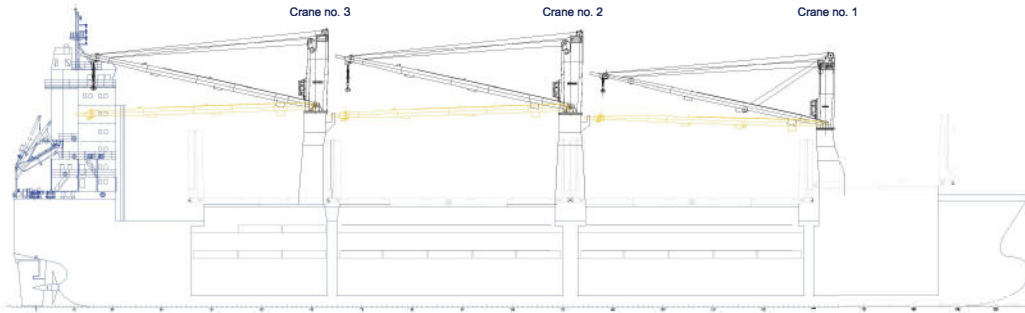
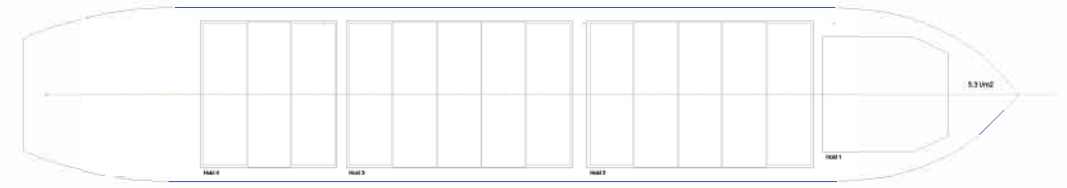


G-CLASS VESSELS

SIDE VIEW



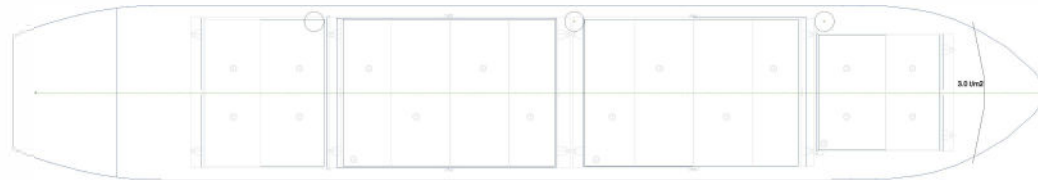
TWEENDECK



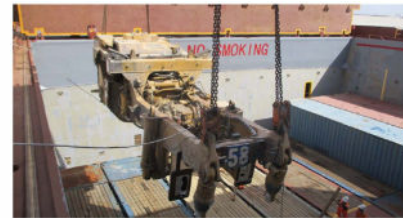
Intake is always subject to vessel's stability, trim, permissible weights and is subject to regulations of visibility. Lifting capacity of vessel's cranes is subject to vessel's stability and can depend on cargo/ballast on board. Container data as well as bale capacity assumes tweendeck ashore. The figures given herewith are for "reference" only and they must not be used as basis for Charter Parties or other contracts without AAL's explicit written authority. For more information on individual vessels within the AAL fleet, please chartering@aalshipping.com.

WEATHER DECK

Crane no. 3	Crane no. 2	
6.0 - 17.5 m 120 t	6.0 - 17.5 m 120 t	
6.0 - 20.0 m 100 t	6.0 - 20.0 m 100 t	
4.0 - 24.0 m 80 t	4.0 - 24.0 m 80 t	
4.0 - 26.0 m 70 t	4.0 - 26.0 m 70 t	Crane no. 1
4.0 - 30.0 m 60 t	4.0 - 30.0 m 60 t	4.7 - 30.0 m 45 t
4.0 - 35.0 m 45 t	4.0 - 35.0 m 45 t	4.7 - 35.0 m 40 t



TANK TOP



Global Head Office

Singapore, SG
T: +65 6248 3600
E: chartering@aalshipping.com

Europe

Hamburg, DE (Regional Hub)
T: +49 40 36 13 04 505
E: chartering@aalshipping.com
Porvoo, FI
T: +358 40 827 7031
E: chartering@aalshipping.com
Paris, FR (Africa Enquiries)
T: +33 6 1578 1859
E: chartering@aalshipping.com

Middle East

Dubai, AE (Regional Hub)
T: +97 14 433 1103
E: chartering@aalshipping.com

Asia

Shanghai, CN
T: +86 21 6135 9600
E: china@aalshipping.com
Beijing, CN
T: +86 10 8447 5255
E: china@aalshipping.com
Qingdao, CN
T: +86 532 8575 3558
E: china@aalshipping.com

Tokyo, JP
T: +81 3 3541 9192
E: japan@aalshipping.com

Oceania

Brisbane, AU (Regional Hub)
T: +61 7 3332 8555
E: chartering@aalshipping.com

Americas

Houston, US (Regional Hub)
T: +1 713 980 1100
E: chartering@aalshipping.com

G-CLASS VESSELS

Type Multipurpose Dry Cargo Ship

Class DNV-GL 100 A5 E1; G IW SOLAS-II-2, Reg.19 DBC; Equipped for Carriage of Containers, Strengthened for Heavy Cargo

Deadweight 25,734 t (summer)

GT/NT 19,128 / 9,736

LOA 159.99 m

LBP 152.00 m

Breadth (Moulded) 27.40 m

Depth (Moulded) 13.50 m

Draft (Summer) 9.80 m

Holds 4

Hatches 4

Tweendecks Tweendecks in holds No. 2, 3 and 4

Hatch Dimensions (L x B)
 No. 1: 18.96 x 18.00 m
 No. 2: 33.57 x 23.00 m
 No. 3: 33.57 x 23.00 m
 No. 4: 18.96 x 23.00 m

Holds Capacity / Volume (100%)
 No. 1: 5,882 cbm
 No. 2: 11,589 cbm
 No. 3: 11,589 cbm
 No. 4: 6,645 cbm

Total 35,705 cbm

Floor Space Tank Top: 2,481 m²
 Tweendeck: 2,125 m²
 Weather Deck: 2,321 m²

Max Permissible Load Weather Deck Hatch Covers: 3.00 t/m²
 Tweendeck Hatch Covers: 3.20 t/m²
 Tank Top: 20.00 t/m²

Container Capacity (Total TEU) 1,620 TEU

Container Capacity (Total FEU) 621 FEU + 59 TEU

Reefer Containers 100 Reefer Points

Cargo Gear Crane 1: SWL 45t 4.7-30.0 m
 Crane 2 & 3: SWL 120t 6.0-17.5.0 m

Maximum Lift Combined 240 t (cranes 2 and 3)

Main Engine STX-MAN 6S40ME-B9
 MCR 6,810 kW at 146 RPM
 CSR 6,469 kW at 143.5 RPM

Auxiliary Engines (3 Sets) Yanmar 6N18AL-EV
 660kW at 900 RPM

Bow Thruster Rated Power 850kW

Dehumidifiers / Ventilation All holds mechanically ventilated / 6 air changes per hour

Dangerous Cargo Class 1-9 (except 1.1-1.6, 2.3 and 5.2) can be loaded in Hold No. 4 in packaged form. Class 1-9 can be loaded on upper deck / hatch covers in packaged form.

VESSEL NAME	AAL GALVESTON	AAL GEELONG	AAL GENOA	AAL GIBRALTAR	AAL GLADSTONE	AAL GUNSAN
YEAR BUILT	2010	2009	2010	2009	2009	2010
IMO NO.	9393577	9393539	9393553	9393565	9393541	9393589
CALL SIGN	5BZE3	5BLQ2	D5RH2	5BXJ2	5BRV2	5BAW3
FLAG	LIBERIA	Cyprus	LIBERIA	Cyprus	Cyprus	Cyprus



chartering@aalshipping.com
 www.aalshipping.com | www.aalshipping.com.cn



WeChat ID: AALSHIPPING
 新加坡澳亚航运有限公司上海代表处



powered by partnerships