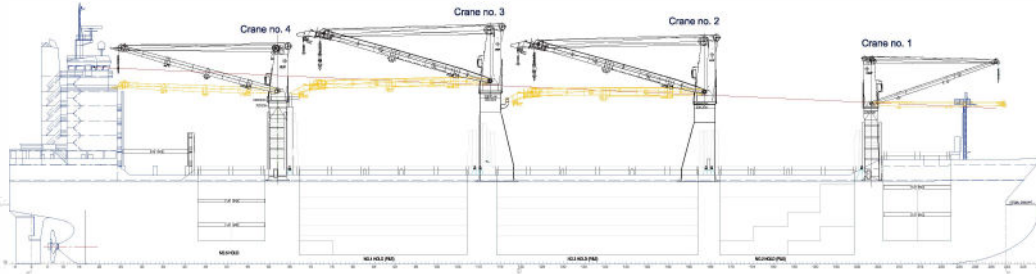


A-CLASS VESSELS

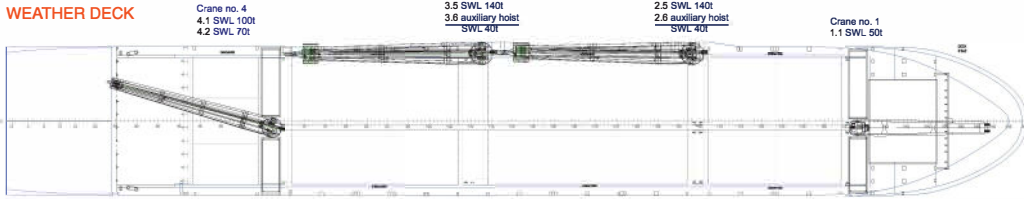
Intake is always subject to vessel's stability, trim, permissible weights and is subject to regulations of visibility. Lifting capacity of vessel's cranes is subject to vessel's stability and can depend on cargo/ballast on board. Container data as well as bale capacity assumes tweendeck ashore. The figures given herewith are for "reference" only and they must not be used as basis for Charter Parties or other contracts without AAL's explicit written authority.

For more information on individual vessels within the AAL fleet, please contact chartering@aalshipping.com.

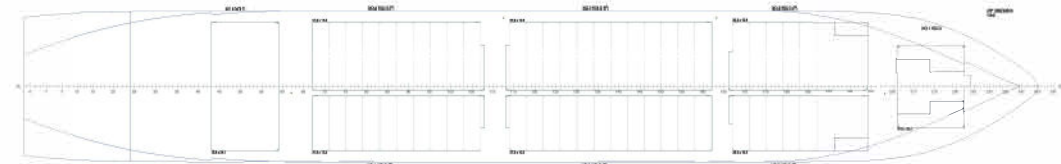
SIDE VIEW



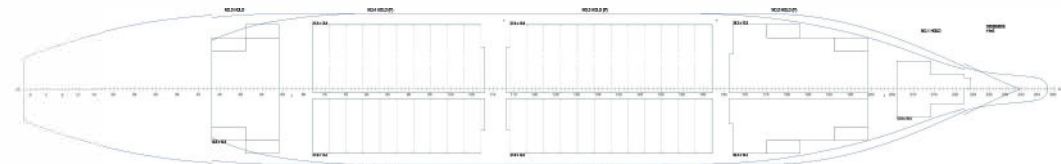
WEATHER DECK



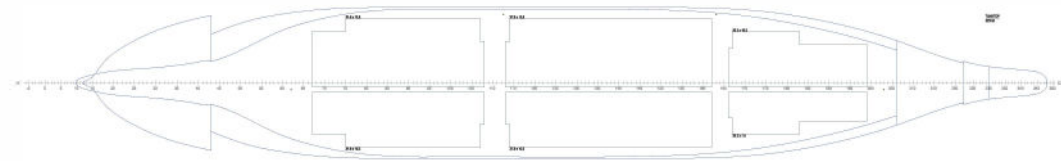
UPPER TWEENDECK



LOWER TWEENDECK



TANK TOP



Global Head Office
Singapore, SG
T: +65 6248 3600
E: chartering@aalshipping.com

Europe
Hamburg, DE (Regional Hub)
T: +49 40 36 13 04 505
E: chartering@aalshipping.com

Porvoo, FI
T: +358 40 827 7031
E: chartering@aalshipping.com

Paris, FR (Africa Enquiries)
T: +33 6 1578 1859
E: chartering@aalshipping.com

Middle East
Dubai, AE (Regional Hub)
T: +97 1 4 433 1103
E: chartering@aalshipping.com

Asia
Shanghai, CN
T: +86 21 6135 9600
E: china@aalshipping.com

Beijing, CN
T: +86 10 8447 5255
E: china@aalshipping.com

Qingdao, CN
T: +86 532 8575 3558
E: china@aalshipping.com

Tokyo, JP
T: +81 3 3541 9192
E: japan@aalshipping.com

Oceania
Brisbane, AU (Regional Hub)
T: +61 7 3332 8555
E: chartering@aalshipping.com

Americas
Houston, US (Regional Hub)
T: +1 713 980 1100
E: chartering@aalshipping.com

A-CLASS VESSELS

v.01/24

Type Multipurpose Dry Cargo Ship

Class DNV-GL, 100 A5E; BWB; Equipped for carriage of containers; NAV-O; Strengthened for heavy cargo

Deadweight 31,000 t (summer)

GT/NT 23,930 / 10,947

LOA 193.90 m

LBP 183.00 m

Breadth (Moulded) 28.20 m

Depth (Moulded) 15.60 m

Draft (Summer) 11.20 m

Holds 5

Hatches 8

Tweendecks Complete Tweendeck levels for holds 3 & 4 / flexible positions

Hatch Dimensions (L x B)
 No. 1: 12.64 x 15.40 m
 No. 2P: 25.28 x 12.80 m / No. 2S: 25.28 x 10.30 m
 No. 3P: 37.92 x 12.80 m / No. 3S: 37.92 x 10.30 m
 No. 4P: 31.60 x 12.80 m / No. 3S: 31.60 x 10.30 m
 No. 5: 12.64 x 24.10 m

Holds Capacity / (Volume 100%)
 No. 1: 2,135.70 cbm
 No. 2P: 4,581.30 cbm / No. 2S: 3,572.20 cbm
 No. 3P: 7,727.20 cbm / No. 3S: 6,218.20 cbm
 No. 4P: 6,398.70 cbm / No. 4S: 5,141.00 cbm
 No. 5: 3,732.40 cbm

Total 39,509.40 cbm

Floor Space
 Tank Top: 2,315 m²
 Tweendeck: 3,649 m² +
 Additional 873 m² of 20/40FT F/L Decks
 Weather Deck: 2,988 m²

Max Permissible Load
 Weather Deck Hatch Covers: 3.00 t/m²
 Tweendeck Hatch Covers: 4.00 t/m²
 Tank Top: 22.00 t/m²

Container Capacity (Total TEU) 910 TEU in holds
1109 TEU on deck

Container Capacity (Total FEU) 922 FEU + 170 TEU

Reefer Containers 145 Reefer Plugs

Cargo Gear
 Crane No. 1 SWL 50 t 3.0-24.0 m
 Crane No.2 & 3 SWL 350 t 5.25-14.0 m
 Crane No.4 SWL 100 t 4.0-24.0 m

Maximum Lift Combined 700 t (Crane 2 & 3)

Main Engine
 Wartsila 7RT-flex50
 MCR 11,620kW at 124 RPM
 CSR 10,458kW at 119.7 RPM

Auxiliary Engines (3 Sets) Wartsila Auxpac 975W6L62
975kW at 900 RPM

Bow Thruster Rated Power 1,100kW

Anti-Heeling System The vessel is equipped with anti-heeling tanks, with an automatic system fully monitored and controlled from the cargo office.

Dehumidifiers / Ventilation Three independent dehumidifiers serve cargo holds No. 2, 3 and 4 (port and starboard) for the safe transportation of sensitive steel/paper and other products. Ventilation of cargo holds in accordance with requirements for carriage of dangerous cargo.

Dangerous Cargo Class 1-9 (excluding 5.2) can be loaded in hold No. 2, in packaged form. Class 1.4(S), 2-9 (excluding 5.2) can be loaded in Holds No. 1, No. 3 and No. 4 in packaged form. Class 1-9 (excluding 5.2) can be loaded on upper deck/ hatch covers (except above E/R) in packaged form. Class 4.1, 4.2, 4.3, 5.1, 6.1(D), 8(D) and 9 can be loaded in bulk in holds No.2, No. 3 and No. 4

Smoke Detection / Fire Fighting All cargo holds are equipped with a fire detection system and a CO2 fire extinguishing system. Cargo hold No. 2 (dangerous goods) is additionally equipped with a sprinkler fire extinguishing system.

VESSEL NAME	AAL BRISBANE	AAL DALIAN	AAL HONG KONG	AAL KEMBLA	AAL KOBE	AAL MELBOURNE	AAL PUSAN	AAL SHANGHAI	AAL SINGAPORE
YEAR BUILT	2010	2013	2013	2011	2012	2013	2012	2012	2011
IMO NO.	9498341	9498470	9498468	9498353	9498444	9498456	9498389	9498377	9498365
CALL SIGN	D5OI7	D5OJ9	5BUK4	D5OI9	D5OJ7	D5OJ8	D5OJ5	5BUJ4	D5OJ2
FLAG	LIBERIA	LIBERIA	CYPRUS	LIBERIA	LIBERIA	LIBERIA	LIBERIA	CYPRUS	LIBERIA

Our second-generation A-Class heavy lift vessels accommodate all cargo types with a market leading intake of 40,000 cbm. A few highlights include: a 700 t max lift capability; five large cargo holds; 2 tweendecks and a weather deck floor space of 2,700 m² – making it one of the finest, youngest and most popular vessel classes in the global MPV fleet.



chartering@aalshipping.com
 www.aalshipping.com | www.aalshipping.com.cn



WeChat ID: AALSHIPPING
 新加坡澳亚航运有限公司上海代表处



powered by partnerships